

Public Realm - concepts for consideration

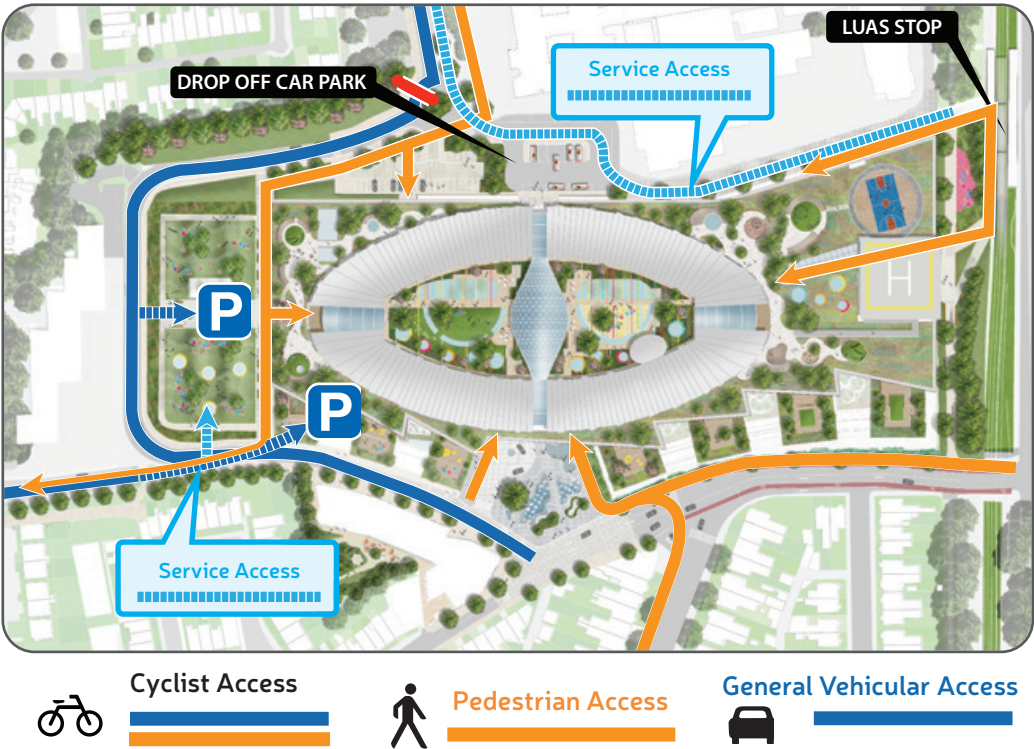


The primary objective of the project is to deliver the best clinical care that we can for our children, however within the project scope there are opportunities to deliver also for the community we share.

From delivering civic amenities to providing new jobs, apprenticeships, graduate programmes, work experience and business opportunities, the project team are committed to working with residents to explore not only how to minimise any impact during construction and operation but also to maximise the benefit to the neighbourhood we share.



Hospital Access COMPLETED SCHEME



connect: JUNE 2015

NPHDB PROJECT OFFICE Hospital 7, Rialto Gate, St. James's Hospital Campus, Dublin 8. email info@nph.ie

NATIONAL PAEDIATRIC HOSPITAL DEVELOPMENT BOARD

DESIGN BUILD EQUIP

working together for our children



working together for our children



connect: JUNE 2015

Creating a world class children's hospital in Dublin 8

EDITION 2

Sharing the vision...



CONCEPT VIEW OF CONCOURSE ▲



CONCEPT VIEW OF RAINBOW GARDEN ▲



CONCEPT VIEW FROM RIALTO LUAS STOP ▲

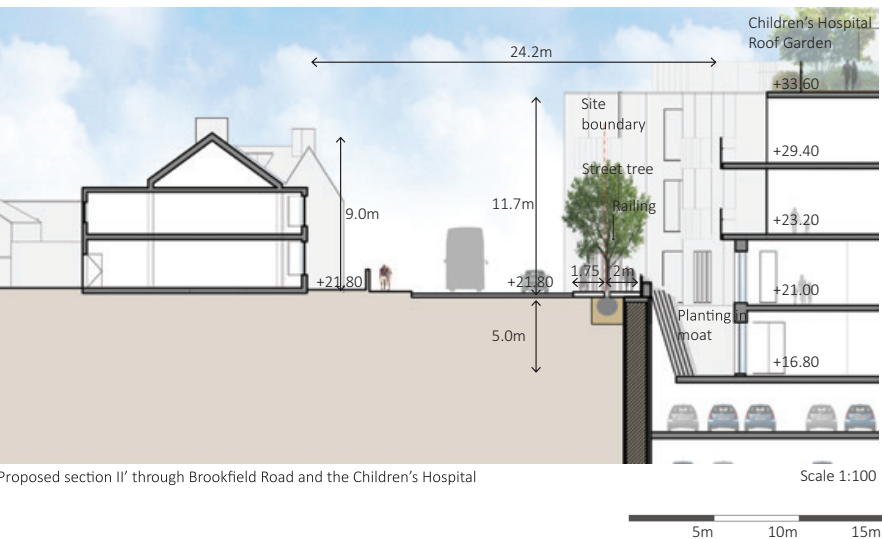
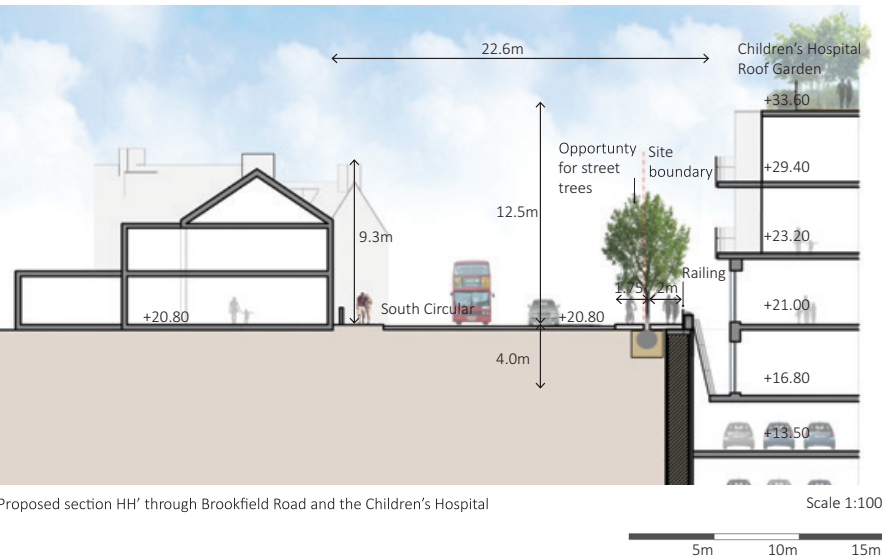


CONCEPT VIEW OVER MEADOW GARDENS TO NEW CHILDREN'S HOSPITAL ▲

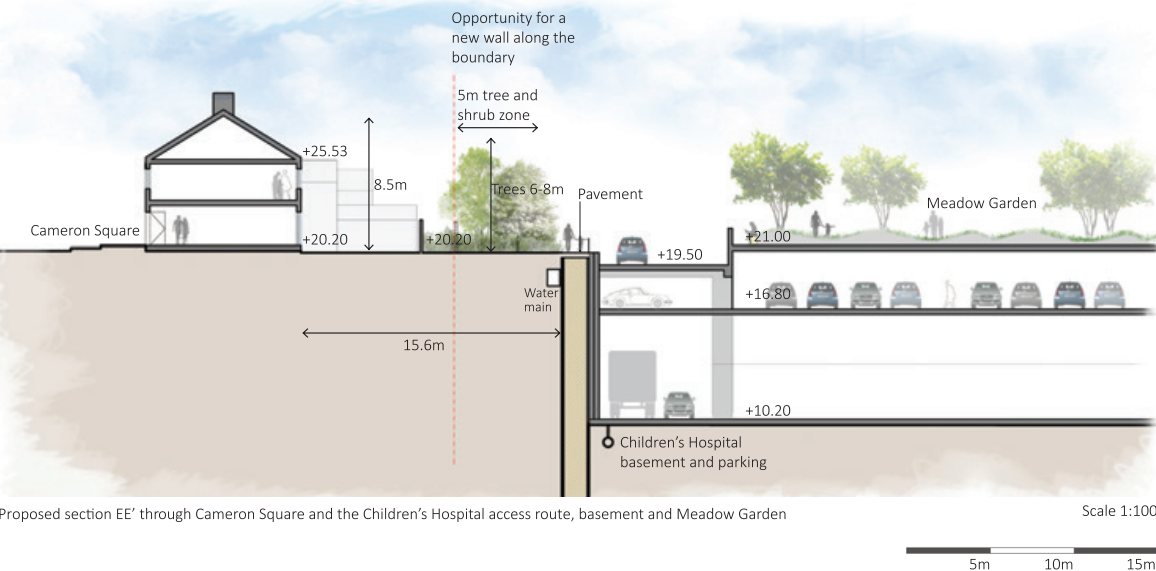
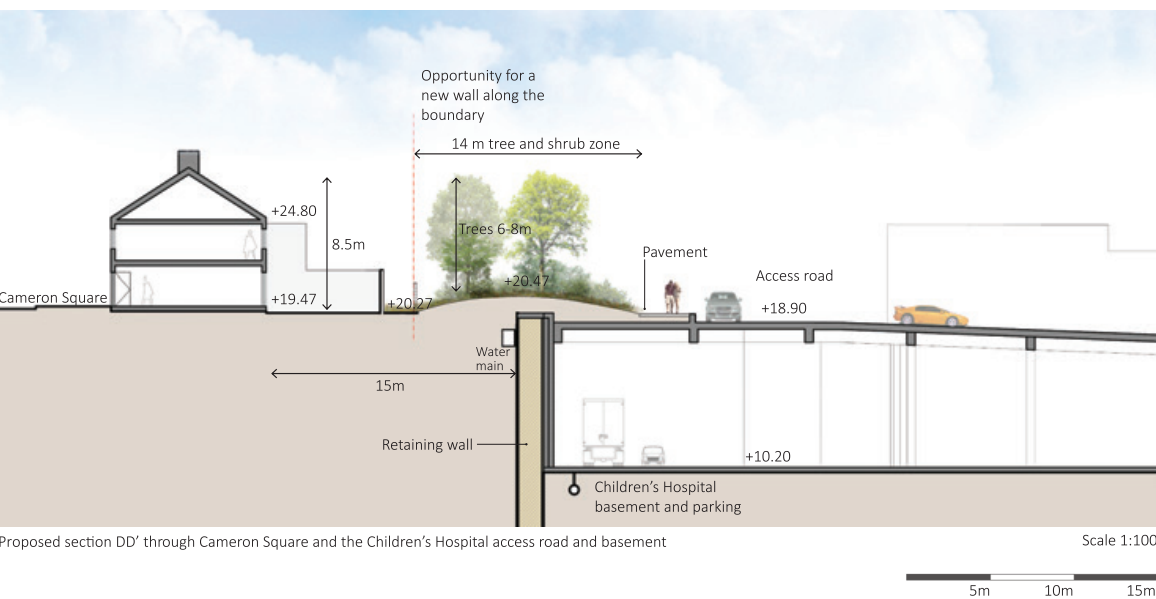
The new children's hospital will be a world class facility to look after children and young people from all over Ireland who have complicated and serious illnesses and who are in need of specialist and complex care. Its completion will lead to a change in how acute health services are delivered and will result in improved survival rates for the sickest children and young people on the island of Ireland. It's about delivering the best we can for our children.

Edge Treatment Overview

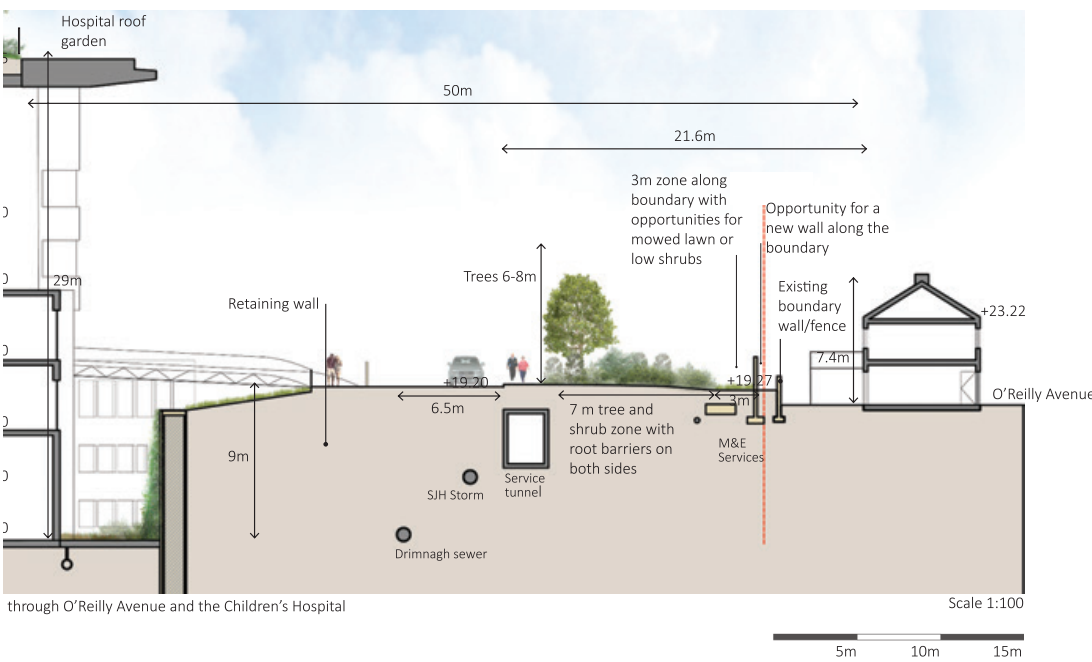
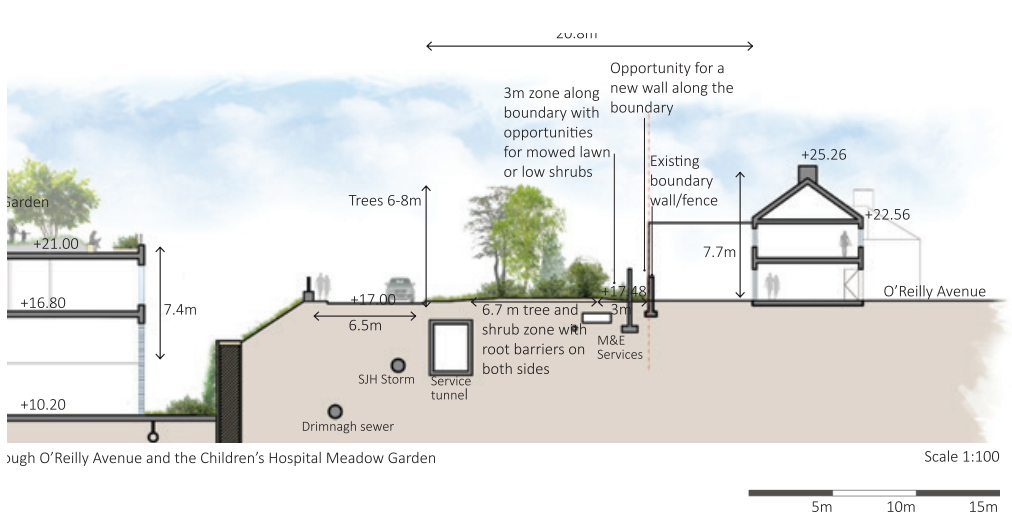
Brookfield Road / SCR Sections



Cameron Square Sections



O'Reilly Avenue & St John's Terrace Sections



Balcony treatments

