



NCH
new children's hospital

connect

August 2015

Be part of a world class children's hospital in Dublin 8

EDITION 3



▲ ARDMHÉARA / LORD MAYOR OF DUBLIN CRÍONA NÍ DHÁLAIGH PICTURED WITH JOHN POLLOCK, PROJECT DIRECTOR THE NATIONAL PAEDIATRIC HOSPITAL DEVELOPMENT BOARD (NPHDB), AT A BRIEFING SESSION HELD ON TUESDAY JULY 28TH FOR LOCAL REPRESENTATIVES ON THE FINAL DESIGNS FOR THE NEW CHILDREN'S HOSPITAL.

The new children's hospital will be the most significant capital investment project ever undertaken in healthcare in Ireland. Its completion will lead to a change in how acute health services are delivered and will result in improved survival rates for the sickest children and young people on the island of Ireland. The National Paediatric Hospital Development Board (NPHDB) will be applying for planning permission to An Bord Pleanála imminently and we are continuing to work with local residents, community groups, local public representatives and hospital staff to create a world class facility.

This newsletter has been developed by the NPHDB as way of sharing information, updating you on key developments and answering the questions that we are regularly asked.

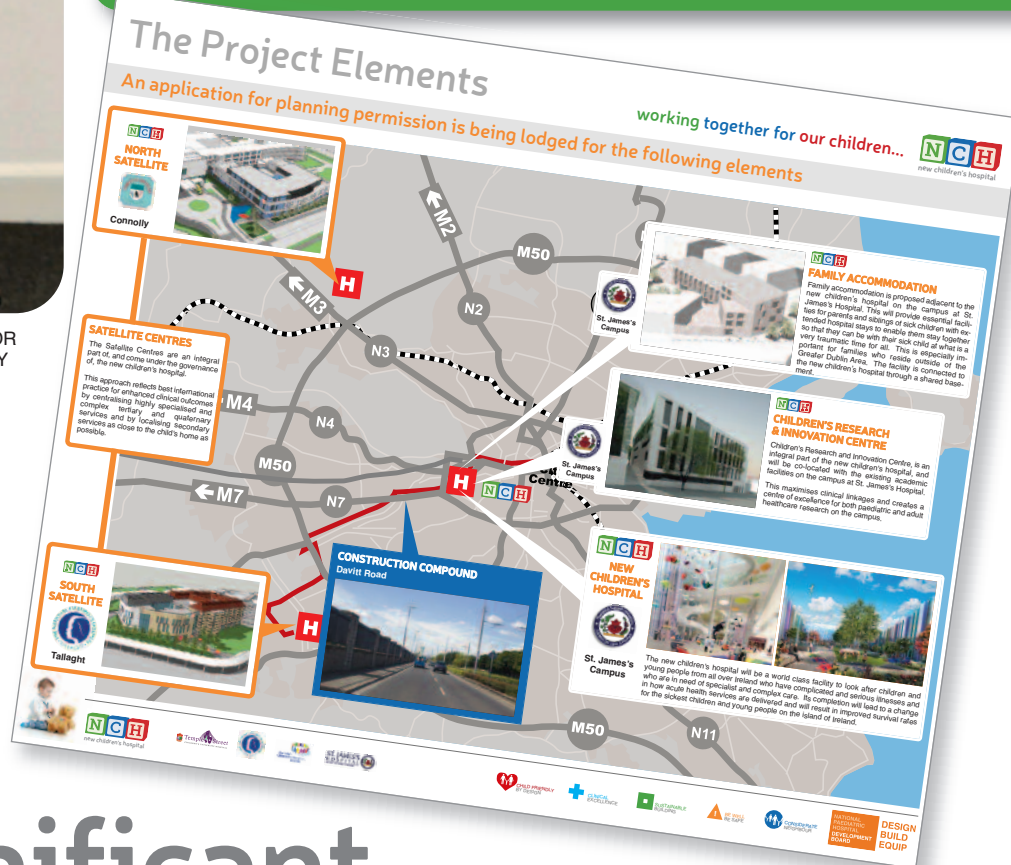
If you have a question that you would like answered please email info@nph.ie

new children's hospital

project to deliver significant benefits to the Dublin 8 community

The new children's hospital investment is unique - both in its nature and size, and as a result provides a great opportunity for the development of the surrounding area.

A core objective for the National Paediatric Hospital Development Board (NPHDB) is to ensure that there is an economic and social community gain for residents who live and work in the community where the hospital will be based. A lot of work is already underway in this area. The NPHDB and the Children's Hospital Group are working in partnership with St. James's Hospital, Dublin City Council, the Department of Social Protection, the Enterprise Training Boards, Community Action Network, and Tusla and many others, to develop a strategy to ensure that the community benefit during both the construction and operational phases of the hospital are maximised. This plan will be developed and implemented in close co-operation with a wide range of local representative groups and will focus on short, medium and long-term employment opportunities as well as training programmes and initiatives that can be introduced to help ensure that the right skill mix will be in the community to meet the anticipated needs of the hospital. School visits, mentoring and uniquely, social clauses in procurement contracts will help to maximise the employment opportunities for residents in the local area.



Already more than 23 community based organisations have been consulted and are helping to inform this process. An audit of the skills and available labour force in the market is currently being carried out by Ernst and Young. Training and education programmes to meet the skills' gap will be developed by the training bodies to ensure that children in school now can select courses and training opportunities that will prepare them for employment opportunities once the hospital opens the doors. The full audit will be published in October.

Speaking about the community and social gain associated with the hospital, John Pollock, Project Director said:

“ This project will have a transformational impact on the local Dublin 8 community. We are putting in place a programme to ensure that we maximise all potential opportunities that the hospital's presence in this community can deliver. A committee has been established to oversee this which is chaired by Gordon Jeyes of Tusla. This is a central part of our work and we are determined that the hospital will not only have a lasting impact on the health and wellbeing of children and young people but also on the health and wellbeing of the Dublin 8 community. ”

Your Questions Answered



The new children's hospital will be tri-located on one campus with St James's Hospital and in time, with the Coombe. This tri-location model of service delivery is being undertaken to ensure the best outcomes for our children and young people, for mothers and for infants.

The new children's hospital will be a world-class facility providing secondary paediatric services for the greater Dublin area and specialist services for the country as a whole. It will be an academic health sciences hospital that values world-class research, education and innovation, which in turn will drive excellence in clinical care.

Working with the urgent care satellite centres in Tallaght and Blanchardstown, with the three Regional Centres and paediatric services across the island, a new model of care for paediatric services will be implemented and will be fully operational by 2020.

? I understand that the planning application is not through Dublin City Council but An Bord Pleanála, why is this?

The new children's hospital project has been deemed a strategic infrastructure development and falls under the criteria of strategic, economic or social importance to the State or region by An Bord Pleanála. As a result, an application for planning permission will go directly to An Bord Pleanála as per Section 37E of Planning and Development (Amendment) Act 2006.

? What is the process for a planning application to An Bord Pleanála, how much time do I have to make observations albeit positive or negative?

The NPHDB will make an application to An Bord Pleanála imminently. Notification of this application will be made public in a national and local Dublin newspaper and a notice of planning application will be placed outside each site being applied for. There will also be a dedicated planning website which will enable the public view all of the plans and documents submitted to An Bord Pleanála for consideration.

Following the application there will be a period of time set aside for the public and others to make submissions, our estimation is that this period will be between six and seven weeks from date of application. We also expect an Oral Hearing to take place in the coming months

? Are the NPHDB applying for planning permission to build a maternity hospital as well as the new children's hospital on the site of St. James's Campus?

The role of the National Paediatric Hospital Development Board relates to the new children's hospital only. A planning application for the new children's hospital at the St. James's campus will be made within the coming weeks.

In submitting the planning application, the National Paediatric Hospital Development Board intends, as a matter of good urban planning practice, to provide full information on all known future developments for the St James's campus, including the tri-located maternity hospital. This will enable An Bord Pleanála to consider the children's hospital planning application in the context of these future plans for the campus.

? When will you start to build the new children's hospital?

This depends on An Bord Pleanála and the granting of a planning permission. However assuming An Bord Pleanála grant a decision in early 2016 we would expect construction works to start shortly after.

? I heard that you have purchased land at the junction of Brookfield Road and Old Kilmainham Road to use as a site for construction, is this correct?

No. We have not purchased any land on Brookfield Road or in the locality of St. James's Campus to facilitate construction. The new hospital has been given use of a HSE site on Davitt Road to facilitate construction. This site will be used for storing materials to allow for the controlled arrival of materials on site. In addition the site can be used to stage vehicles waiting during construction events such as major concrete pours, this will assist in mitigating the potential impacts during construction of the new hospital. Construction traffic and deliveries will be minimised during peak periods

? Has the land at the junction of Brookfield Road and Old Kilmainham been purchased by St. James's Hospital or the HSE Estates?

No, we have checked with both parties and they have not acquired this land.

? Does this mean that construction workers will be parking on the local roads close to St. James's Campus?

No. Construction workers will not be permitted to park on the local streets in the vicinity of St. James's Campus. This condition will be set out in the main contractor's terms & conditions the main contractor will need to provide construction workers with parking facilities at a park and ride venue and the construction workers will then be expected to use public transport to travel to St. James's Campus.

? Have you decanted the site and demolished the buildings at the Rialto Gate area of St. James's?

St. James's Hospital are currently decanting medical services on the site of the proposed new children's hospital, however, no buildings will be demolished until planning permission has been granted.

Assuming that planning permission is granted, what will be the working hours of construction?

Working hours during construction will be stipulated by the planning authority.

I live in close proximity to the proposed new children’s hospital? I am concerned about building affecting my light, can I see the shadow studies?

The Environmental Impact Statement included with the planning application will address the studies that have been completed to assess daylight issues, these will be available for public viewing once the planning application has been made to An Bord Pleanála.

How many car parking spaces are being allocated to the new children’s hospital?

There will be 1000 parking spaces associated with the new children’s hospital. These will include spaces for families and visitors as well as an emergency drop off location. The parking system we are putting in place will enable families to reserve a parking space ahead of arriving to the hospital.

I understand that 675 spaces of the 1000 car parking spaces is for families, how do you know that this is enough?

The existing three children’s hospitals have in total 230 parking spaces provided for families and it is recognised that this is not sufficient to cater for the family parking demands at the existing children’s hospitals. For the new children’s hospital at St James’s Hospital campus the number of family parking spaces has been calculated based on the expected number of patients who will be treated at the new hospital.

With respect to in-patient and day care beds, approximately 1 parking space has been provided for every occupied bed within the children’s hospital. For outpatient clinics the number of required parking spaces has been based on the scheduling of clinic appointments and the average appointment duration. Finally, the parking demand associated with the Emergency Department has been based on the projected number of daily cases, the arrival profile of patients and the length of time patients are treated within the Emergency Department. Information with respect to urgent care cases has been based on historical information obtained from the existing children’s hospitals.

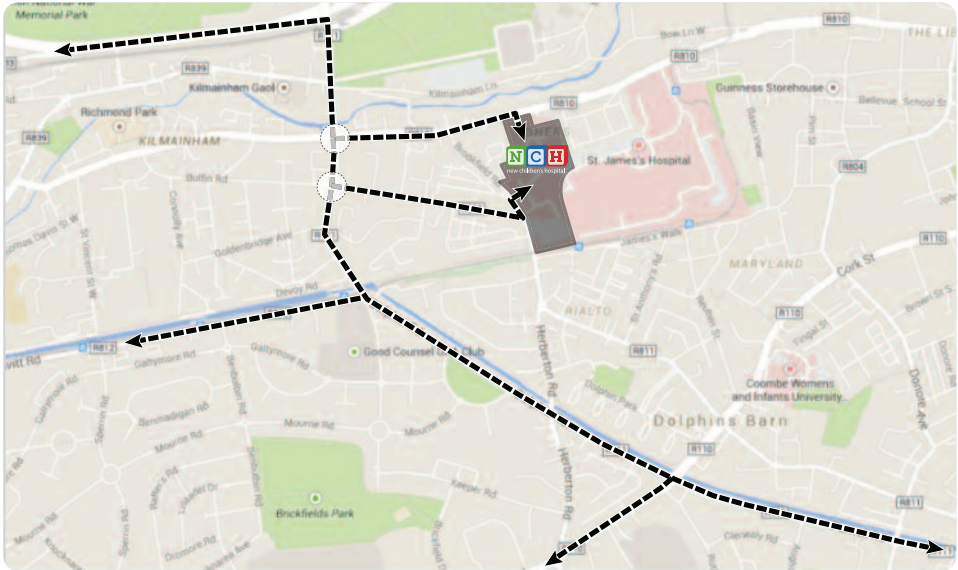
Finally, the calculated family parking requirement has been increased slightly to reflect daily variations in the number of outpatient and urgent care visits to the new children’s hospital. The details of the family parking calculation will be included in the Environmental Impact Statement.

How do you propose controlling staff & visitors to the hospital parking on residential streets surrounding the hospital?

To ensure parking restrictions within the St James’s Hospital campus do not impact negatively on residential parking it is proposed, in consultation with local residential communities and in conjunction with Dublin City Council, to extend the existing pay parking system in the vicinity of the St James’s Hospital campus. The extension of the pay parking system will deter long term parkers from occupying residential streets in the immediate vicinity of the Hospital campus, ensuring that the impact the proposed development has on the residential amenity of the local area is mitigated. The St James’s Hospital Campus Smarter Travel Programme will work with, and support local communities who wish to see changes to the on-street pay parking controls in the area, including changes to the payment structure and the pay parking time periods.

How will construction traffic access the site?

The primary construction routes serving the new children’s hospital will be consistent with the designated HGV routes prescribed for the Dublin city centre and they will form the primary access and egress routes between the construction site and the external road network. Two access routes are proposed to serve the construction site, one via Mount Brown and the second via the South Circular Road. The following figure presents the key construction traffic access routes.



The details of the construction access routes and projected change flows during the construction phase of the Project will be included in the Environmental Impact Statement.

The roads in the vicinity to St. James’s Hospital are already congested, will they be able to cope with extra traffic to the area?

It is acknowledged that during peak commuter periods, and similar to many central urban areas, traffic congestion can occur on the local street network surrounding the hospital and the need to minimise traffic impacts during these time periods has formed a key component of the Transport Strategy for the proposed development.

The proposed development includes a reduction of staff parking spaces on campus and the introduction of the St James’s Hospital Campus Smarter Travel Programme. The table below presents the projected change in staff parking provision at St James’s Hospital campus following the construction of the new children’s hospital.

	Existing	Proposed	Change
Staff parking on SJH campus	1,124 spaces	880 spaces	-244 spaces

These measures will act to reduce the volume of traffic generated by the Hospital during peak commuter periods mitigating against any increase in traffic associated family/patient visits to the Hospital during these time periods. It is worth noting that the majority of family/patient visits to the hospital will be outside of the peak commuter periods and the local street network has sufficient capacity to accommodate increased trips to the Hospital.

How will parents with sick children get to the site at peak congestion hours?

The ambulance service will be allowed to avail of existing bus lanes on approach to the St James’ Hospital campus, including the bus lanes along the N4 Chapelizod Bypass, Thomas Street and Emmet Road. In addition, South Circular Road between Con Colbert Road and Suir Road, as well as Parnell Road and Dolphin Road running along the Grand Canal have on-street cycle lanes which can be utilised to improve access to the St James’s Hospital campus by the ambulance service during peak periods. If parents are arriving to the new children’s hospital by car in an emergency situation, the emergency services can be called to transfer the children to ambulance or escort them to the hospital directly.

Presentation of final designs for the new children's hospital



▲ TALLAGHT HOSPITAL BOARD



▲ CRUMLIN HOSPITAL BOARD



▲ TEMPLE STREET HOSPITAL BOARD

The designs for the new children's hospital and satellite centres are completed to a stage ready for submission to An Bord Pleanála shortly. Pictured at recent meetings to the Boards of Crumlin, Temple Street and Tallaght Hospital presenting the final design of the facilities, which is a hospital developed on a shared campus with St James's Hospital in Dublin 8. The new children's hospital - which brings the 3 existing children's hospitals at Crumlin, Temple Street and Tallaght, under one roof - will be tri-located on a shared campus with Ireland's largest teaching hospital St James's Hospital. The two satellite centres at Tallaght and Connolly Hospitals are included in the planning application.

Sharing the Vision



VIEW FROM RIALTO LUAS STOP ▼

HOSPITAL ENTRANCE ▲



RIALTO BRIDGE ▼



GARY DUNPHY OF IRISH RAIL SPEAKING TO ST. JAMES'S HOSPITAL STAFF ABOUT THE TAXSAVER TICKET SCHEME AT THE SMARTER TRAVEL DAY

St. James's Hospital launches Travel Day Smarter Ways to Get Here

The St. James's Hospital Smarter Travel Day offered staff the opportunity to explore the various travel options and make informed choices on their commute to work.

The hospital is well served by the Luas, bus and train services and is readily accessible to cyclists and walking. Representatives from the public transport providers, local bike shops, [taxsaverbikes.ie](#) and the NTA were busy on the day, staff particularly interested in the Taxsaver Ticket Scheme and the Bike to Work Scheme. The Physiotherapy and Clinical Nutrition Departments offered advice on an active and healthy lifestyle. And as it was Bike to Work Week a bike mechanic serviced staff bikes for free.

The Smarter Travel Day was part of the St James's Campus Smarter Travel initiative. A Travel Plan is being implemented with the objective of reducing the number of cars accessing the Campus. Central to the plan is the facilitation and communication of travel options to all those accessing the campus. This will enable informed choices to be made on using alternatives to the car when accessing the hospital.

BARRY MCKENNA,
MOBILITY MANAGER, ST. JAMES'S HOSPITAL



An onsite "SmarterTravel" Commuter Centre will open soon within the hospital campus and serve as a one stop shop for information and services on travelling to and from the hospital.