



new children's hospital

A World Class Children's Hospital Project



6150 rooms in total

Located on **12** acres



the size of **6** soccer pitches



The size of Dundrum Town Centre, with an internal street the length of Grafton Street



380 individual, en-suite inpatient bedrooms – each with a bed for parent

93 Day Beds

53 53-unit family accommodation facility

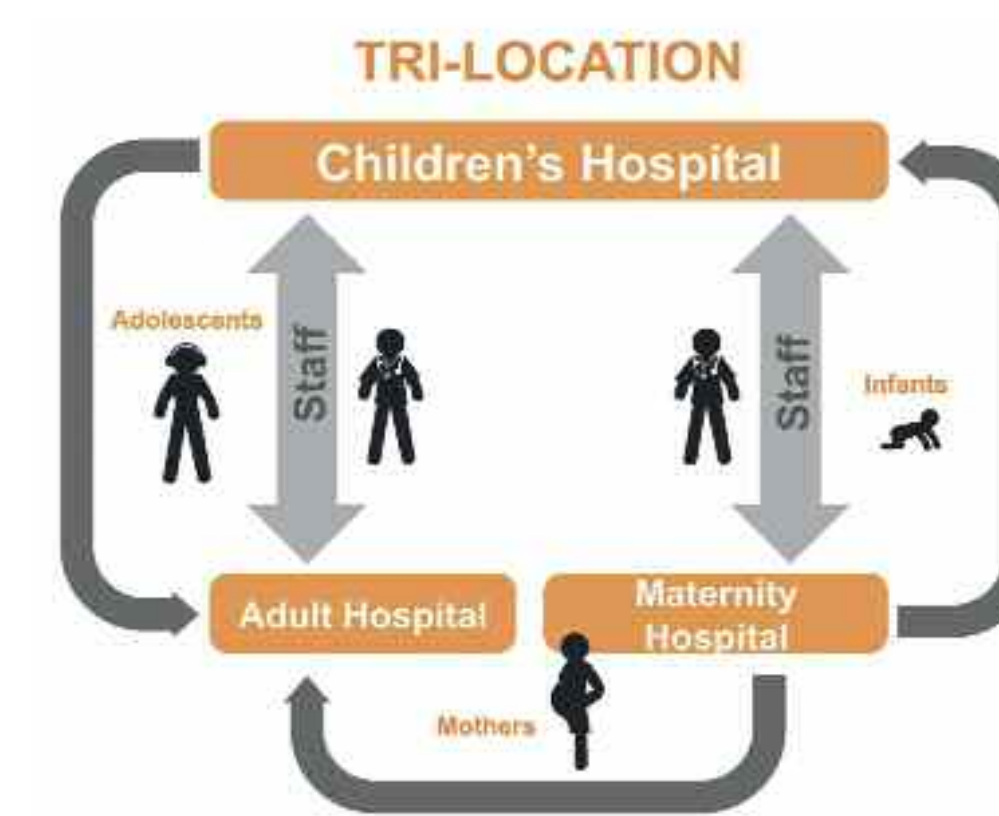


P 1,000

parking spaces

675 dedicated for families

31 emergency spaces, at ground level



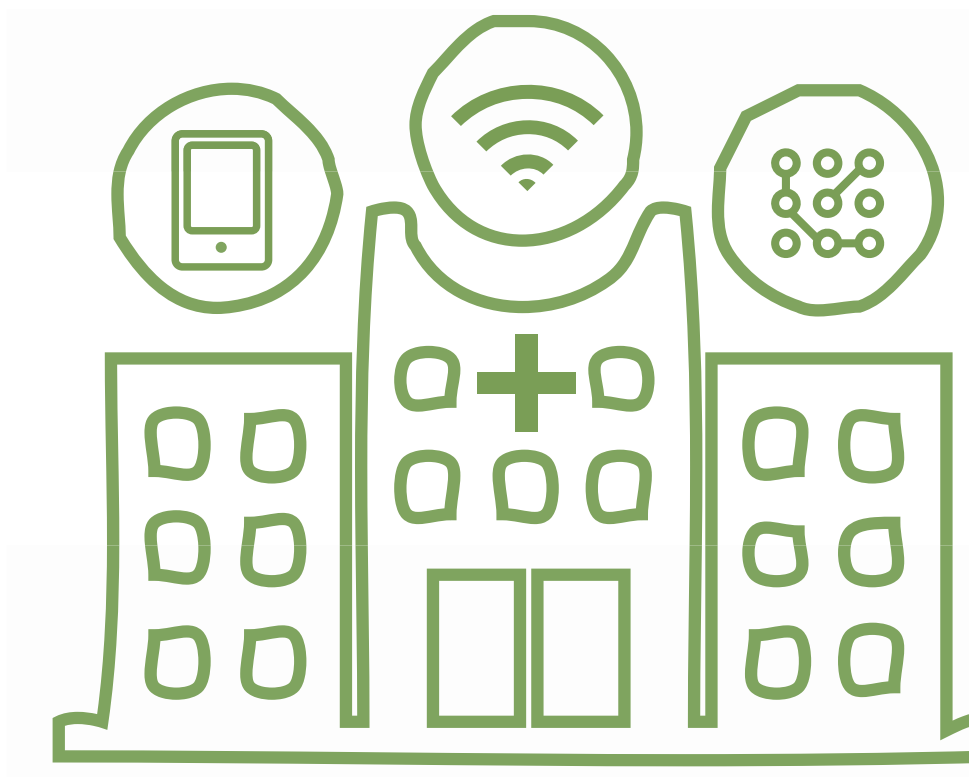
Tri-location with Adult and Maternity hospitals on a shared campus



A Children's Research and Innovation Centre

1st

public digital hospital



2 new paediatric outpatient & urgent care centres at Tallaght Hospital and Connolly Hospital



22 Operating Theatres & Procedure Rooms (nch only)



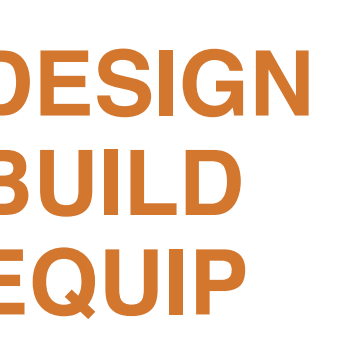
4 acres of outdoor space with **14** gardens and courtyards



Find out more

@nch_info

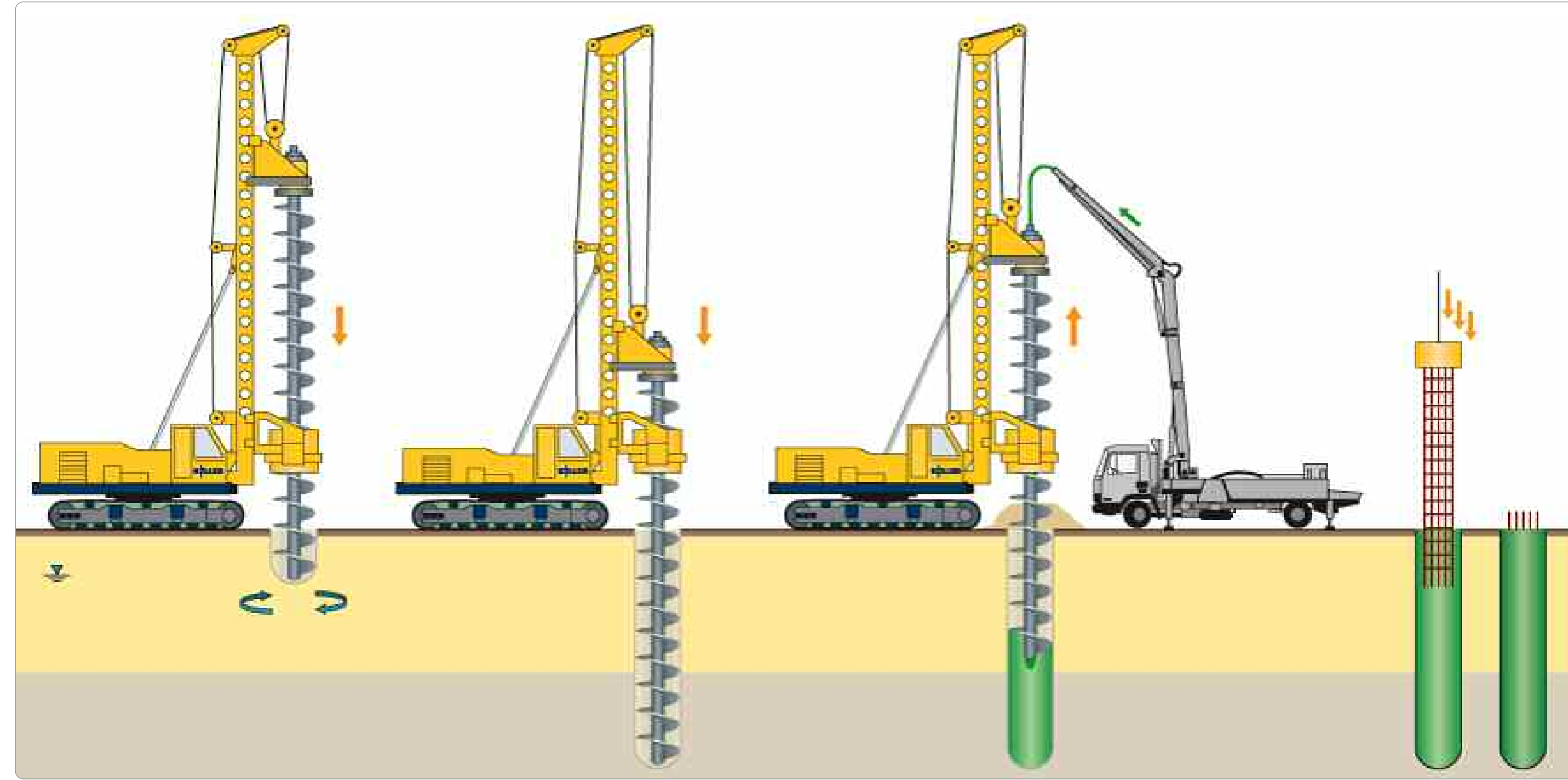
www.newchildrenshospital.ie



During the construction of the new children's hospital BAM will be using an array of different types of plant & machinery during each stage of work. Some of these are shown here.



▲ BASEMENT WALLS ARE FORMED USING SECANT PILES
A MAJOR ADVANTAGES OF THIS METHOD IS THAT IT IS LESS NOISY THAT OTHER PILING



▲ PILING RIG



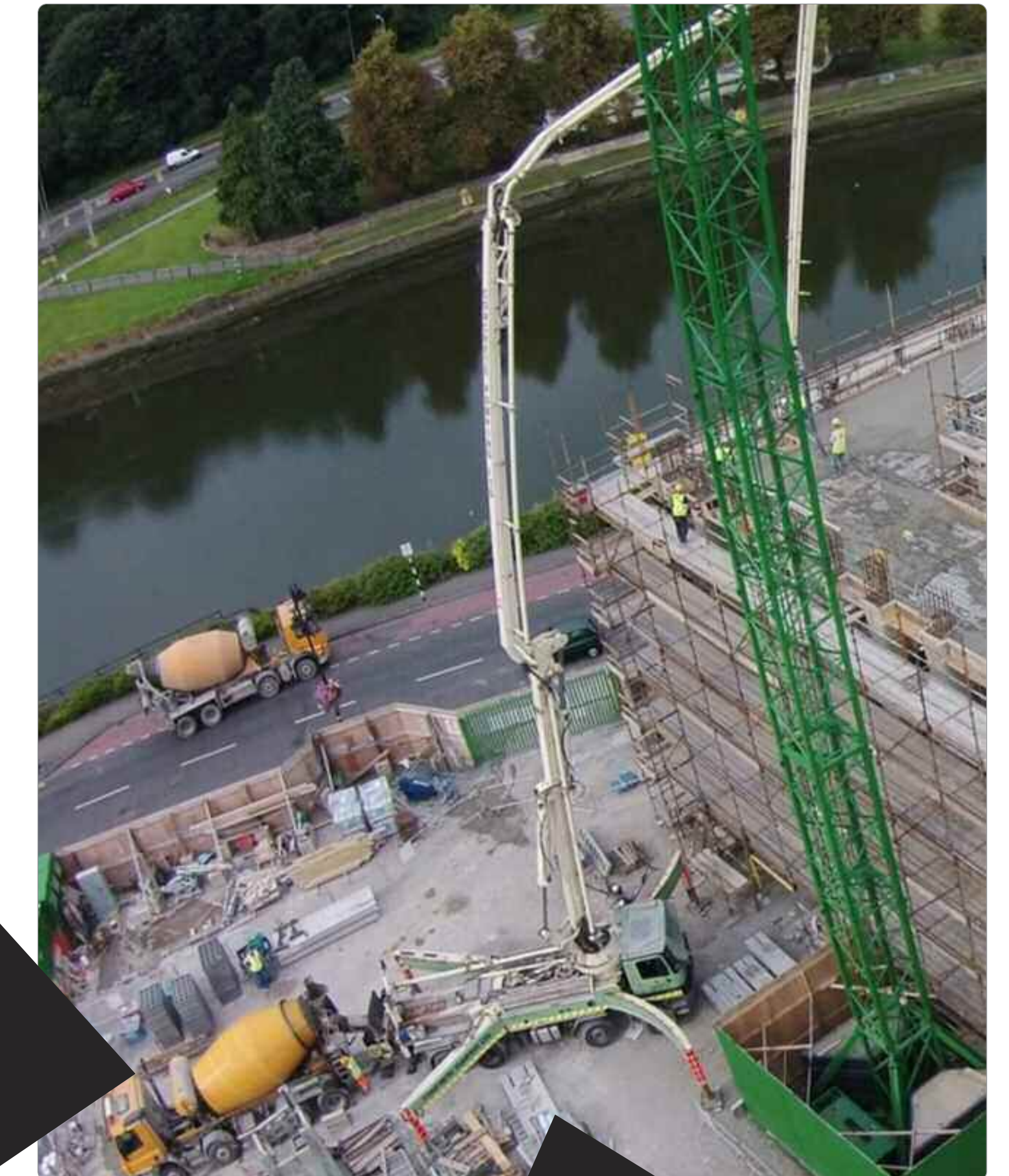
▲ MINI-DIGGER



▲ RIDE ON ROLLER



▲ TELE-PORTER



▲ TRUCK WASHING SYSTEM



▲ ROLLER



▲ COVERED BODY LORRY



▲ WATER SPRAYER



▲ DUMPER



▲ EXCAVATOR LOADING LORRY



▲ CONCRETE MIXER LORRY & CONCRETE PUMP



Construction Works '3 month look ahead'





Site Cleared at St. James's Hospital



 bam

May 2017



Community Benefit Programme

Building a Partnership with the Community...



▼ 23 LOCAL COMPANIES ATTENDED BAM'S MEET THE BUYER EVENT SEPTEMBER 2016



...with Job-seekers and local businesses

INNOVATIVE COMMUNITY BENEFIT CLAUSE IN ALL TENDERS REQUIRES:

Targeted Recruitment & Training

- Over 10,000 person weeks of employment ring-fenced for "new entrants" i.e. job Seekers/Early/School-leavers & Graduates/people new to construction/apprentices
- All vacancies to be notified and advertised through community channels including local Intreo and LES
- Work with statutory and community agencies to bridge skills gaps

Supply Chain Opportunities

- Meet the Buyer Events
- Business Mentoring for local businesses

▼ JOHN POLLOCK, PROJECT DIRECTOR, NPHDB, STUDENTS FROM MERCY SECONDARY SCHOOL, INCHICORE, AND MINISTER CATHERINE BYRNE.



...with schools & colleges

With the Contractor and Hospitals we will encourage young people to take up careers in construction and healthcare related occupations

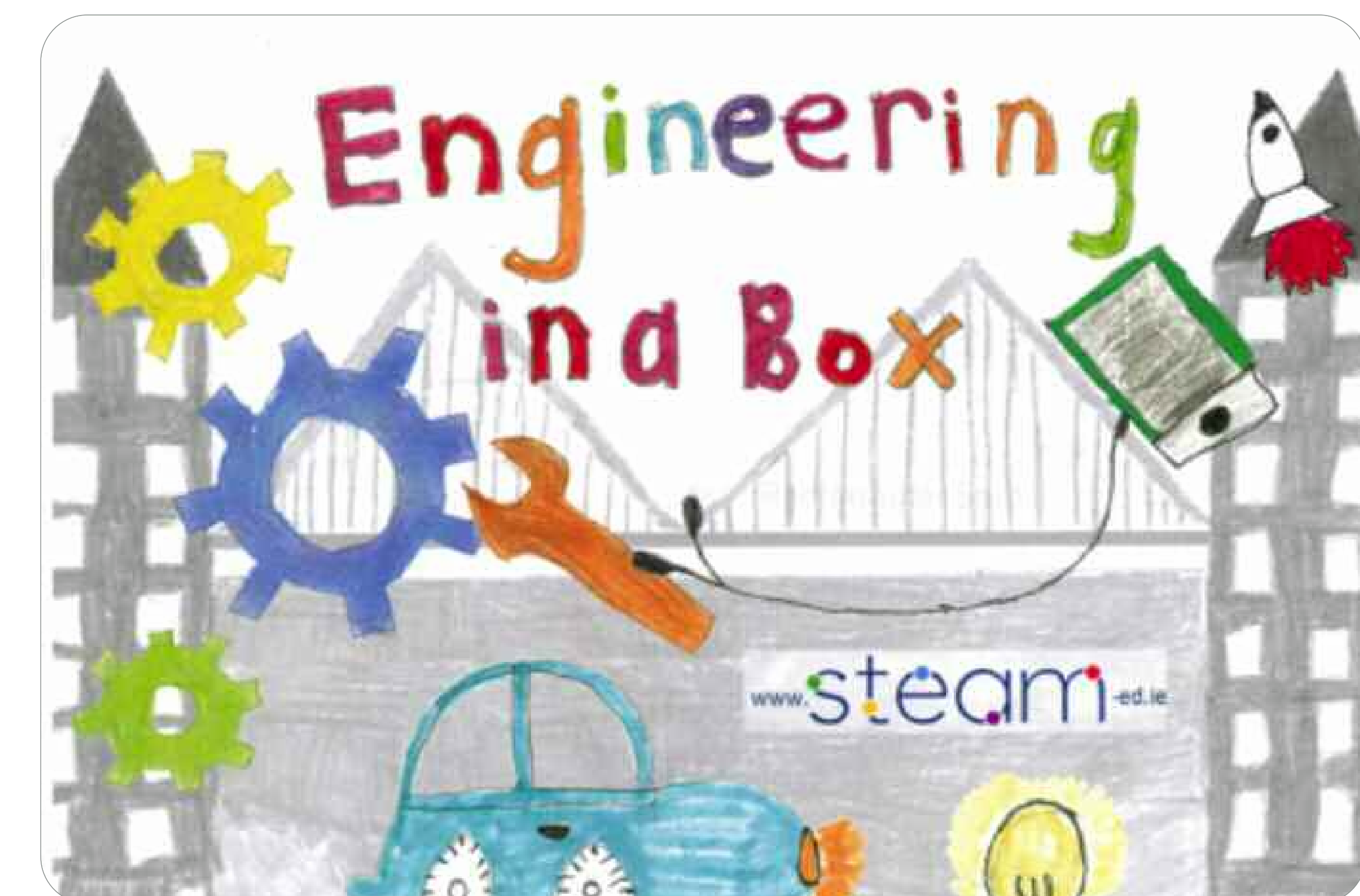


▲ CONSTRUCTION & ENGINEERING CAREERS EVENT" MARCH 2017
ATTENDED BY NEARLY 300 LOCAL YOUNG PEOPLE

Towards a Sustainable Future

The Community Benefit Programme will also be encouraging the hospitals to maximise opportunities for local people to take up job opportunities by working with schools, community partners, employment and training organisations as well as trying to maximise links with local businesses and social enterprises.

For example, NPHDB/CHG have renovated previously unoccupied offices in Herbeton as their project base, investing in the area and in local companies.



▲ NPHDB ENGINEERS HAVE BEEN WITH WORKING STUDENTS IN ST JAMES PRIMARY SCHOOL, BASIN LANE

