



# connect:

JANUARY 2018

## Working Together For Our Children

Dear Resident

Welcome to Resident Connect which relates to the construction of the new children's hospital and the Davitt Road Compound site in Drimmagh.



The new children's hospital, which is being developed on a shared campus with St James's Hospital, is the most significant capital development in healthcare in the history of the State. When it opens in 2022, the new hospital will have more than 6,000 rooms and 4 acres of outdoor space. It will be the size of Dundrum Shopping Centre and the length of Grafton Street.

In addition to the hospital, a Children's Research and Innovation Centre and a 53 bed - family accommodation unit is also being constructed on the campus as part of the project, as well as two new outpatients and urgent care centres - one at Connolly Hospital on the north of the city and a second at Tallaght Hospital on the south. This hospital project will be one of the most medically and technically advanced in Europe and will support clinicians in delivering improved clinical outcomes for a quarter of the population - our children and young people.

As part of the planning permission for the project (which was granted by An Bord Pleanála in April 2016) a small section 100m x 100m of the former Unilever site on Davitt Road will be used by BAM as a temporary construction compound during the construction phase of the hospital. The purpose of this compound, which will be operational from early February 2018 and for the duration of the construction, is to store building materials and to allow for the controlled arrival of materials on the site of the hospital on St. James's Campus, mitigating against potential traffic impacts.



## A world class children's hospital



**6150** rooms in total

Located on **12** acres



the size of **6** soccer pitches



The size of Dundrum Town Centre, with an internal street the length of Grafton Street

**380** individual, ensuite inpatient bedrooms each with a bed for parent



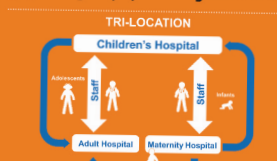
**93** Day Beds

**53** 53 unit family accommodation facility



**P 1,000** Parking Spaces

675 dedicated for families  
31 emergency spaces at ground level



Tri-location with Adult Maternity hospitals on a shared campus

A Children's Research and Innovation Centre

**1st** public digital hospital



**2** New paediatric outpatients & urgent care centres at Tallaght and Connolly Hospital



**22** Operating theatres & procedure rooms (nch only)



**4** acres of outdoor space with **14** gardens and courtyards

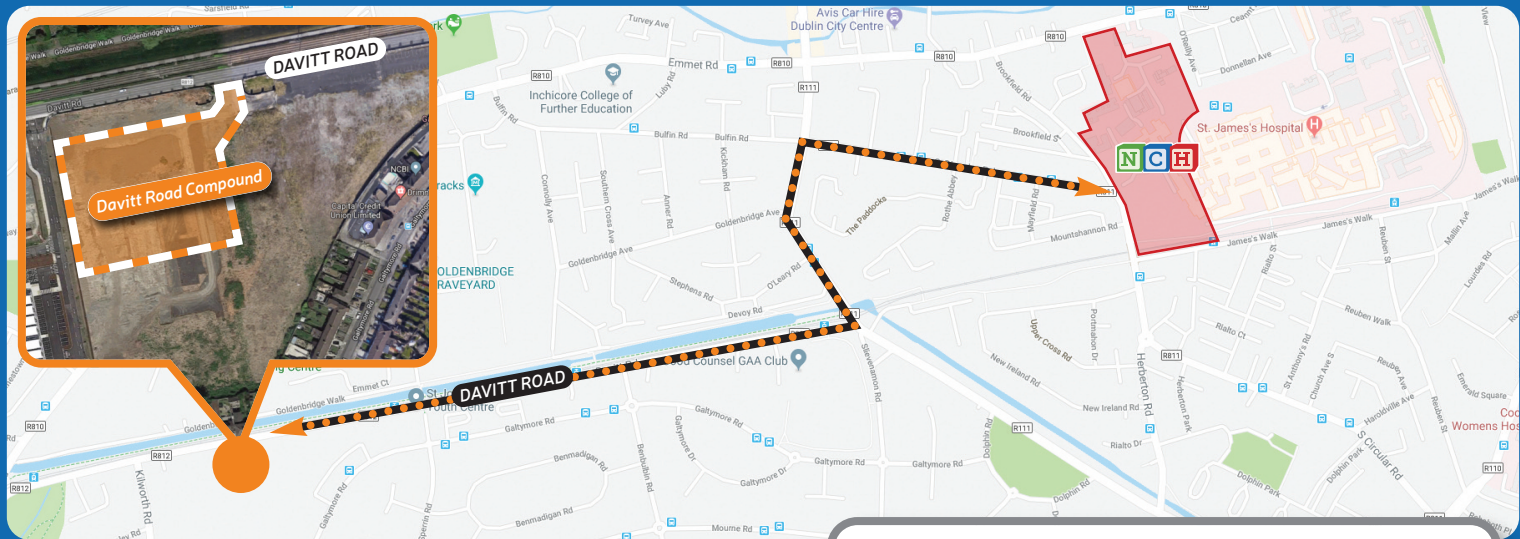


NATIONAL  
PAEDIATRIC  
HOSPITAL  
DEVELOPMENT  
BOARD

DESIGN  
BUILD  
EQUIP

working together for our children  
[www.newchildrenshospital.ie](http://www.newchildrenshospital.ie) @nch\_info #ourchildrenshospital





**Q. Who owns this land?**

A. The Health Service Executive own this land and have offered its use to the National Paediatric Hospital Development Board during the construction of the new children's hospital.

**Q. When will BAM start using the compound?**

A. From February 5th 2018.

**Q. What size will the compound be?**

A. Approximately 100m x 100m.

**Q. What are the opening hours of the compound?**

A. As per the An Bord Pleanála planning conditions, the hours of work will be **Monday to Friday from 7am until 7pm and Saturday from 8am until 2pm.**

**Q. How long with the compound be used for?**

A. For approximately four years.

**Q. How will the compound be secured?**

A. There will be 24-hour security via a combination of security cameras and personnel. The site will be securely locked and monitored when not being used. The compound area will also be surrounded by a rigid 3 metre hoarding, which will be constructed in early February.

**Q. What will the compound be used for?**

- A. ■ Storage of dry construction materials such as plastic, rebar and steel pipes, pre-cast concrete. There may be a small crane and / or mobile teleporter located at the compound for the purposes of loading and unloading trucks with materials;
- The staging of concrete trucks, before proceeding towards the St James's Hospital campus;
- Deliveries of building materials for storage before transfer to St James's Hospital campus;
- Transfer of materials to the Main Construction site; and
- Construction management (staff, visitors)

**Q. How will local traffic change in the area as a result of trucks visiting the compound?**

A. Very careful and detailed planning has been done to ensure that traffic disruption is kept to a minimum. The Traffic and Mobility programme has been approved by the National Transport Authority and Dublin City Council and was rigorously analysed by An Bord Pleanála as part of the planning process. A Traffic Management plan for safe access/egress will be put in place in February.

**Q. As a resident who is my point of contact should I need to speak to someone about the compound?**

A. BAM have established a designated **24/7 RESIDENT'S HELPLINE** and can be contacted on (01) 531 1110.



new children's hospital



**24/7 RESIDENTS HELPLINE**

**01 531 1110**

[info@nph.ie](mailto:info@nph.ie)

[www.newchildrenshospital.ie](http://www.newchildrenshospital.ie)

NPHDB PROJECT OFFICE: Block A, Herberton, St. James's Walk, Rialto, Dublin 8. tel 01 556 4500 email [info@nph.ie](mailto:info@nph.ie) [www.newchildrenshospital.ie](http://www.newchildrenshospital.ie)

NATIONAL  
PAEDIATRIC  
HOSPITAL  
DEVELOPMENT  
BOARD

DESIGN  
BUILD  
EQUIP



new children's hospital

**connect:**  
JANUARY 2018